
CAE PERFORMANCE PRODUCTS PTY/LTD

Pyrenees Hwy Chewton, VIC. 3450
Telephone : (03) 5472 1442 - Fax (03) 5472 4111

64 Fairlane Compact Under Dash Cable Wiper Kit

Customer Instructions

Components

Wiper Motor with Flex Drive Cable 125 deg x 1200mm cable

Wiper Mounting Bracket, U-Clamp and Rubber

Bundy tubing cut to approx lengths – two pieces cut and flared at 1.0mtr lengths and a short end piece at 120mm long also flared.

Two Wheel boxes, Chrome Bezels

Wiring Loom, Fuse and Switch.

Customer Instructions

Note:

The flared tubing, is cut to approximate length and flared at one end by using a standard 5/16 flaring tool. Do not Kink or dent this tubing or serious damage will occur to the Wiper Motor. **Kinked or Dented tubing must be replaced.** Some gentle bending can be achieved but you must have the flex cable inside while bending

It helps the fitment of the flex into the tubing by running a 1/4" drill down the inside of the tube at each end to remove any imperfections caused by the flaring operation.

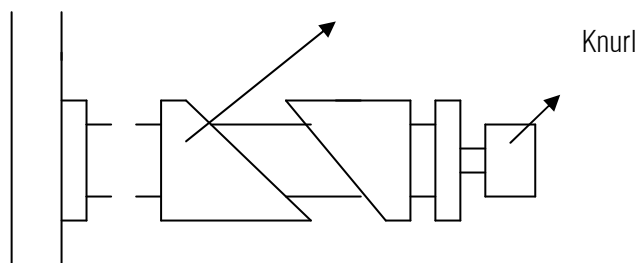
1) Remove old Wiper Assemble and dismantle the original posts. Save the angled spacer from each post. Drill the spacers out to 5/8" clearance and fit these to the new wheelboxes.

2) New Wheelbox Installation.

When fitting the wheelboxes, the LHS (Passenger side) is to be mounted with the cable and tubing running on the top side of the wheel box (looking from the front seats) and the RHS (Drivers side) to have the cable and tubing running on the bottom side of the wheel box, this is to give the correct parking position for the wiper blades if they come towards each other in the centre of the windscreen. For windcreens where the blade park pointing in the same LHS direction then the Wheelboxes can be fitted with the cable running over the top of both wheel boxes

New Post

Original Aluminium Height adjustment spacer



CAE PERFORMANCE PRODUCTS PTY/LTD

Pyrenees Hwy Chewton, VIC. 3450
Telephone : (03) 5472 1442 - Fax (03) 5472 4111

- 3) Adjust the height of the Post by trimming the Original Aluminium Spacer, until you obtain the post being flush with the Chrome Bezel and Nut when it is tight

- 4) Mount the Wiper Motor thru its rubber clamp onto the mounting bracket loosely and then mark out and drill to suit the motor mounting and the first cable tube. Use two teck screws to fasten the bracket to the vehicle. The universal mounting bracket can be cut and drill to what you require. The motor should be mounted as high as possible and have a fairly straight line to the first wheel box and be hanging down towards the floor. The connecting tube to the first wheel box should be as straight as possible and cut and flared to suit the LHS Wheelbox.

- 5) When you are happy with the motor mounting, thread the flex cable thru the first tube and in to the LHS wheel box, then thru the centre interconnecting tube, then into the RHS Wheel box and then into the end piece of tubing which only needs to be short enough to cover the excess flex cable. This flex can be cut if it is too long. The interconnecting tube between the two wheel boxes can be slightly bent to allow the cable to move down to the bottom of the RHS wheel box, but care must be taken not to dent or kink the tubing. Don't forget to cut the centre tube to the correct length and flare the end with a standard 5/16mm Flaring tool.

- 7) RHS Wheel box end piece is 120mm but can be shorter if you trim the excess flex cable

- 8) Connect the 6Pin Loom connector to the wiper motor. Connect the Brown wire to a suitable earth on the body of the vehicle. Connect the Red Wire through the fuse supplied to a suitable Ignition +ve feed circuit on the vehicle. Mount the rotary switch and activate the wipers. When in the park position fit the Arms and Blades, rotate and check the self parking position and adjust if necessary. If the Wiping angle is too great, we can provide other sweep angle gears for the wiper. Please contact us for the requirement.

CAE PERFORMANCE PRODUCTS PTY/LTD

Pyrenees Hwy Chewton, VIC. 3450
Telephone : (03) 5472 1442 - Fax (03) 5472 4111

WINDSCREEN WIPERS

Windscreen Wiper Systems ----- Some useful helps.

1. Motor

This is a two speed wiper motor, with self parking.

Make sure you use the correct bracket and strap with the rubber covering, and the motor is not touching any part of the vehicle body to eliminate noise.

2. Drive Gear

When the new motor arrives there is a threaded brass ferrule to take the first drive tube. There are a couple of gears to fit this motor with the number 100 or 130 which is stamped on the top round plate. This is giving the least amount of travel to the rack and wiper arms.

On the top of the gear plate where the number is stamped there is a drive peg welded in position. This is the only item which changes position throughout all the gears (e.g. welded in different positions on the top plate.). Obviously if this peg was welded to the centre of the plate there would be no travel at all, so the further the peg is positioned to the outer edge of the plate the more travel you get. With each gear come 2 washers and a circlip retains the gear in to the motor, always pack with grease in the gear area before refitting the top cover.

3. Wheel Boxes

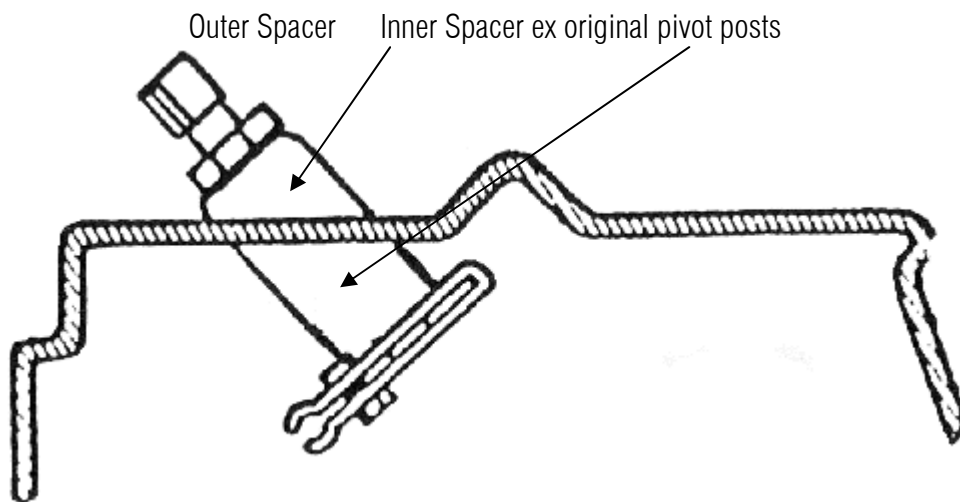
The wheel box size is 32 teeth on the inner drive wheel and the ideal length of shaft from the inner face to the end of the splines is 2.5 inches. This allows for the thickness of material on fibreglass cars as the first spacer can be cut down in size allowing for varying thicknesses through the bulkhead where the wheel boxes fit.

If the car has a split screen then it is quite easy to fit what was called the clapped hands system. This is by turning one of the wheel boxes through 180 degrees.

CAE PERFORMANCE PRODUCTS PTY/LTD

Pyrenees Hwy Chewton, VIC. 3450
Telephone : (03) 5472 1442 - Fax (03) 5472 4111

Wheelbox showing inner and outer spacer which will require some radius work to suit individual shaped cowls



Reference Drawing

4. Drive Rack

When fitting a new system to a existing vehicle, it is advisable to fit a new drive rack as this is one of the items that wears, resulting in the wiper arms having too much play.

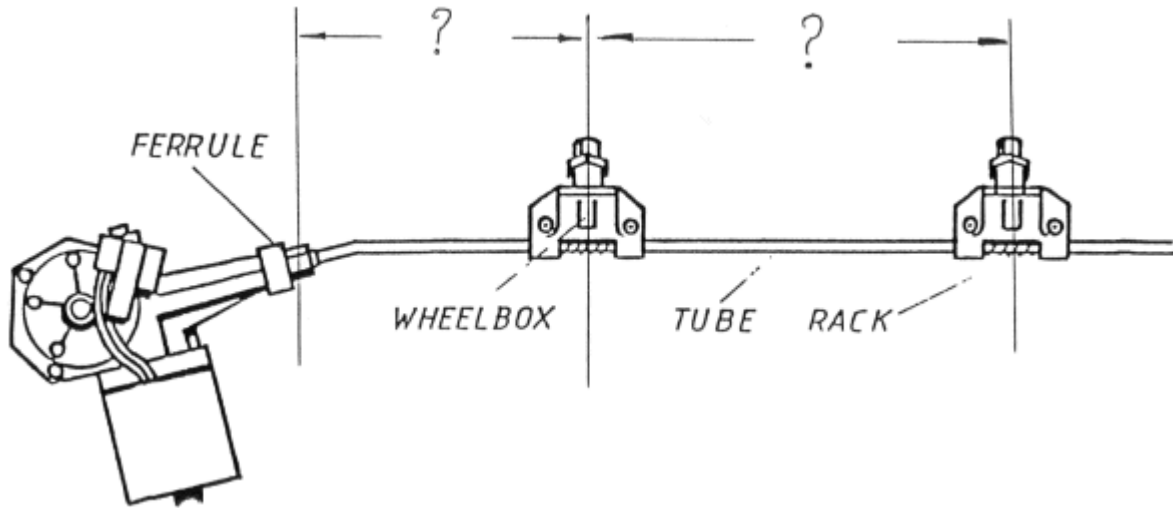
5. Drive or "Bundy" Tubing Sets

It is far better to use the recommended wiper tubing (5/16 Steel Brake Tube) than to use copper tube as this can be noisy and wears very quickly on any bends. Wear of the drive tube, sharp bends or kinks in the tube, causes friction that can lead to the motor burning out.

Bundy tube sets can be made up providing you give the supplier 2 dimensions. The first is the distance from the motor to the centre of the first wheel box hole, and the second the distance between the wheel box hole centres through the bulkhead. Obviously if there is a 3 wiper system then there is another dimension needed. Try to avoid sharp bends in the tubing, If you have to bend the bundy tube, an easy way to form the shape is to insert the drive rack into the tube before bending. This will keep the tube the correct diameter on any of the bends (very much like a plumber bends copper piping by inserting the spring). Always grease the rack liberally before inserting into the bundy tube.

CAE PERFORMANCE PRODUCTS PTY/LTD

Pyrenees Hwy Chewton, VIC. 3450
Telephone : (03) 5472 1442 - Fax (03) 5472 4111



Drive Tube Dimensions Drawing

Note for centre parking blades, the LHS wheelbox is reversed and its drive cable and Tube runs over the top of the wheelbox and the centre tube is bent in a slight s bend to bring it back down to under neath the RH Wheelbox.

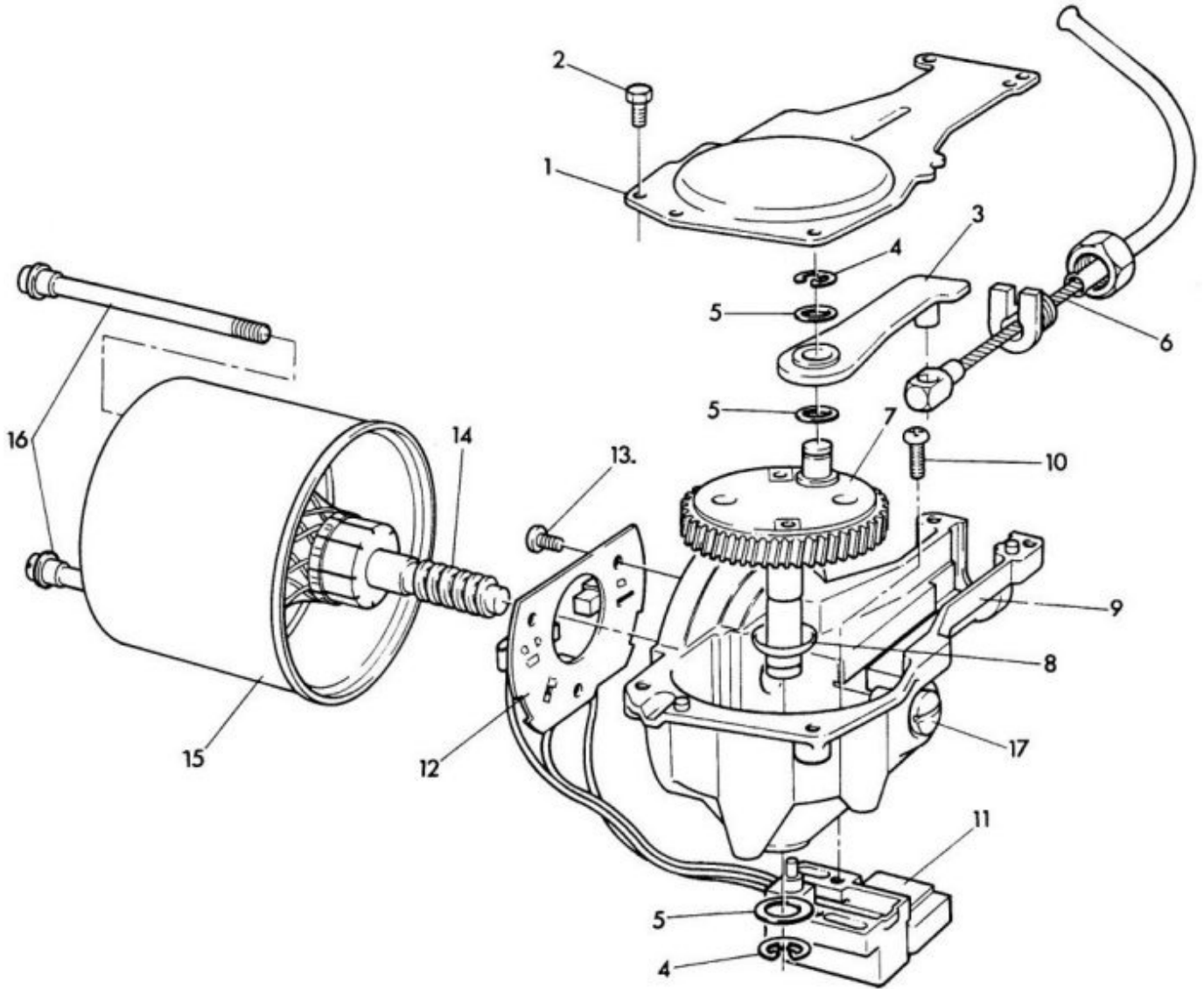
6. Switch

It is important that you use the correct wiper 2-speed switch as supplied. The reason for this is that when the switch is in the off position with the ignition switched on there is one connection which becomes live. This operates the parking position. If you use a non-live switch then the wipers would stop whenever the switch was switched off.

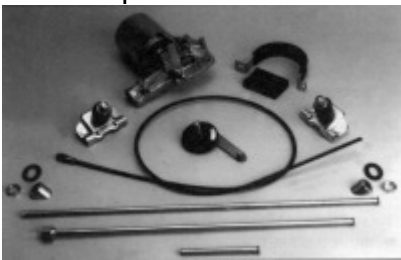
If purchasing a second hand motor make sure there are 3 wires going into the motor body. This is the way to tell if the motor is 2-speed, 1 speed only has 2 wires.

CAE PERFORMANCE PRODUCTS PTY/LTD

Pyrenees Hwy Chewton, VIC. 3450
Telephone : (03) 5472 1442 - Fax (03) 5472 4111



- KEY:**
- | | | |
|------------------------|----------------------------|----------------------|
| 1 Gearbox cover | 7 Gear wheel with crankpin | 13 Screw for brushes |
| 2 Screw for cover | 8 Dished washer | 14 Armature |
| 3 Connecting Rod | 9 Gearbox | 15 Yoke |
| 4 Circlip | 10 Limit switch screw | 16 Bolts |
| 5 Washers | 11 Limit switch | 17 Thrust screw |
| 6 Flexible wiper drive | 12 Brush gear | |



WIPER KITS

Made to your requirements

CAE PERFORMANCE PRODUCTS PTY/LTD

Pyrenees Hwy Chewton, VIC. 3450
Telephone : (03) 5472 1442 - Fax (03) 5472 4111



WASHER KIT ASSEMBLY 1.2 LITRES

Bottle & pump assembly,
mounting bracket,
push button switch,
tube & a twin Jet.



WINDSCREEN WASH PUMP

Drive Tube (correct material) Cut & flared.

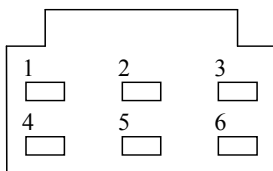
No Charge

Wheelboxes

32 tooth gear wheel.3 1/4 inch drive shaft.

Wiper Motor Pin Outs.

Plugs viewed from the front not the wiring side

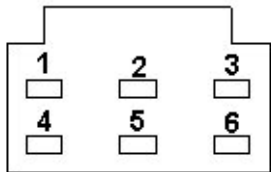


- 1) Black (Earth)
- 2) Green/Red (Low)
- 3) Blue/Red (Park)
- 4) Blank
- 5) Yellow/Blue (High)
- 6) Green/White (+ve)

CAE PERFORMANCE PRODUCTS PTY/LTD

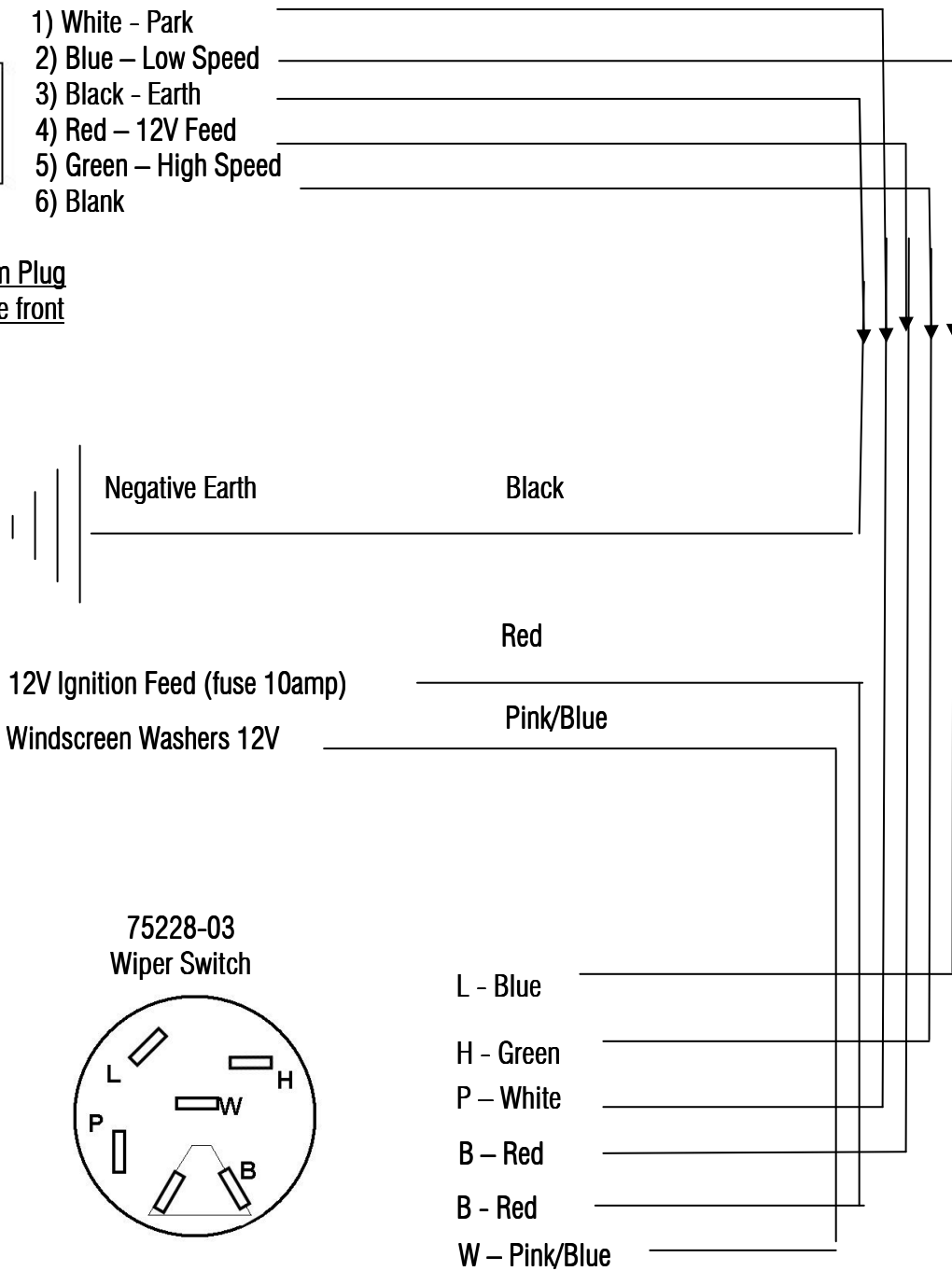
Pyrenees Hwy Chewton, VIC. 3450
Telephone : (03) 5472 1442 - Fax (03) 5472 4111

WIPER MOTOR LOOM PINOUTS



- 1) White - Park
- 2) Blue - Low Speed
- 3) Black - Earth
- 4) Red - 12V Feed
- 5) Green - High Speed
- 6) Blank

6 Pin Female Loom Plug
As Viewed from the front



Wiper switch system is 12V Positive Feed